



EINDHOVEN



## BIKE Ownership -BIKE Safety - BIKE Skills

Hello. The municipality of Eindhoven would like to know how many children in primary schools in Eindhoven have a bicycle, whether this bicycle is safe and whether you can cycle yourself? That is why we would like an answer to the following questions. Cycling is healthy, fun and convenient for going places. Yippee. Happy to cycle.

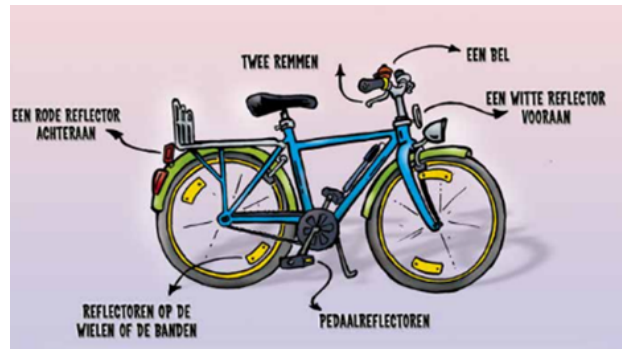
Name of school:

I am in Group:

### Question 1: Do you have a bike?

- Yes
- No (*Go to Question 3*)

**Is Your Bike Safe?** If you have your own bicycle, is it also safe? A safe bicycle has, among other things, front and rear lights and...



### Question 2: Which working parts do you have on your own bike?

- **more than one answer is possible**
- a working front light
- a working back light
- reflectors on the bike, on the spokes or in the wheels
- working brakes
- a bell that people can hear
- I do not have any of these on my bike

**Question 3: Can you cycle yourself?**

- Yes
- A little, not very well
- No (*Go to Question 12*)



**Biking to school**

**Question 4: Do you cycle to school on your own?**

- Yes
- No (*Go naar VRAAG 12*)



**How often do you cycle to school?**

**Question 5: How many days per week do you bike to school?**

- 1x per week
- 2x per week
- 3x per week
- 4x per week
- 5x per week

**Riding safely to school**

**Question 6: Do you think it is dangerous to cycle to school on your own bike?**

- Yes
- No (*Go to question 8*)

Yes; There is not a safe route to cycle to school

**VRAAG 7: Yes; I find it dangerous to bike to school because:**

- ***more than one answer is possible***

- there is no or poor cycle paths along the way
- there is no or poor lighting along the way
- when it is busy there is too much traffic on the road
- cars and other vehicles drive too fast where I have to cycle
- I have to cross to many dangerous roads
- the traffic lights do not work properly
- other: \_\_\_\_\_

Is the entrance to the school safe?

**Question 8: Do you think it is dangerous to cycle near the school entrance on your bike?**

- Yes
- No (*Go to question 10*)

Yes; The school entrance is dangerous.

**Question 9: Yes; I think the entrance to the school is dangerous because:**

- ***more than one answer is possible***

- there are poor cycling facilities and cycle paths
- it is too busy with cyclists/ pedestrians at the school entrance
- it is too busy with cars at the school entrance
- cars are driving too fast at the school entrance
- other: \_\_\_\_\_

SCHOOL - Bicycle shed

**Question 10: Does the school have a good bicycle shed?**

- Yes (*Go to question 12*)
- I don't know as I don't use it (*Go to question 12*)
- No

The school's bicycle shed is not good

**Question 11: What is not good about the school's bike shed?**

- **more than one answer is possible**

- it is too small, there is not enough room
- bicycles are lying around, everything is mixed up, it is messy
- poor or broken bicycle racks
- difficult to get to
- too far from the school's entrance
- poor lighting, safety
- I don't use the bicycle shed*
- other: \_\_\_\_\_  
\_\_\_\_\_

If you don't come to school by bike, how do you get there?

**Question 12: I don't bike to school, I come by:**

- walk
- on someone else's bike (parents, sibling, grandparents or friend)
- in the car
- with the bus
- other: \_\_\_\_\_  
\_\_\_\_\_

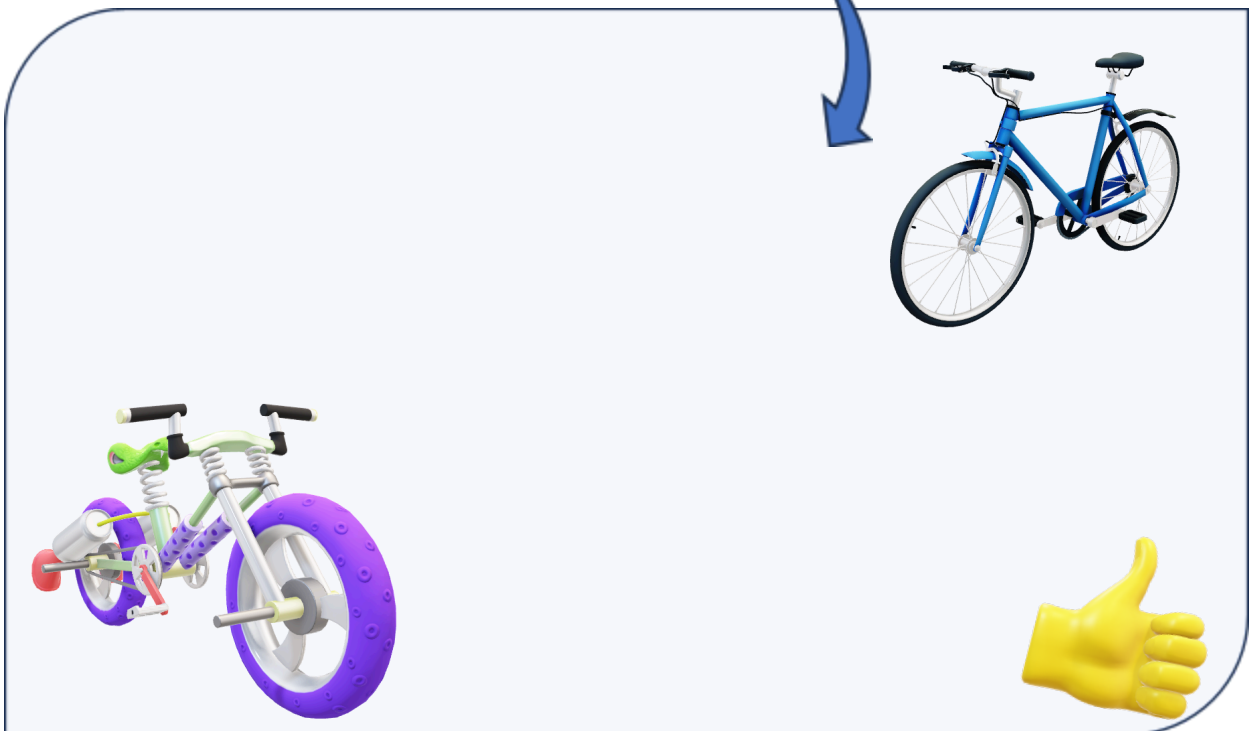
Would you like to learn to cycle (better) yourself?

**Question 13: Would you like to take part in a free cycling lesson to learn to cycle (better) yourself?**

- Yes
- No

You are finished: Thank you - Love Cycling

**Question 14: Is there anything else you'd like to say about cycling? Do you like cycling or would you like to be a better cyclist? Write your answer here.**



**LOVE CYCLING.**

